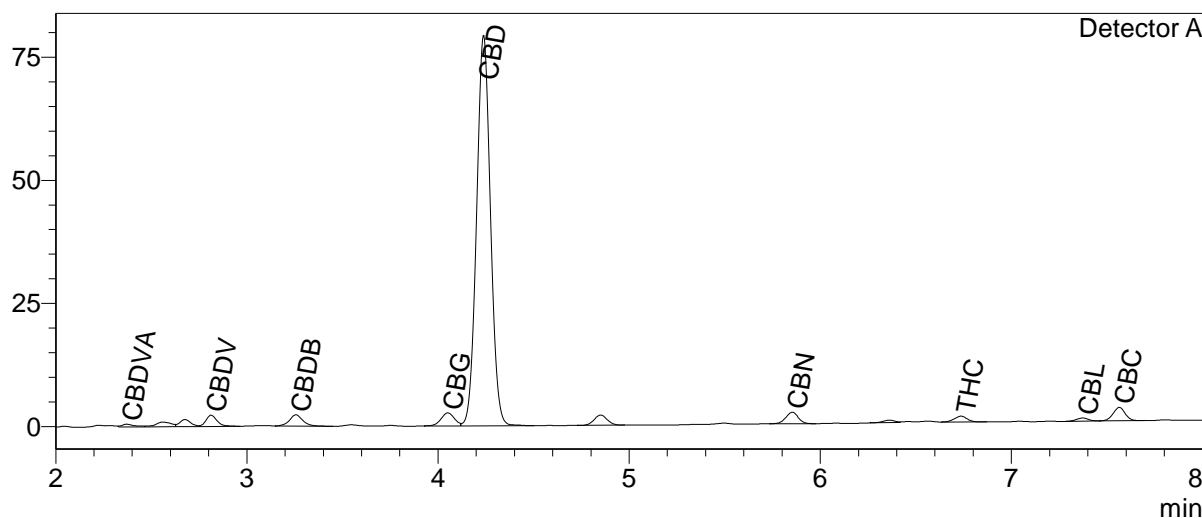


jorùs

CERTIFICATE OF ANALYSIS

Chromatogram



Quantitative Results

Detector A

Compound Name	Concentration, %
CBDV	0.328
CBDA	--
CBGA	--
CBG	0.464
CBD	16.496
THCV	--
CBN	0.192
THC	0.132
CBC	0.446
THCA-A	--
CBL	0.068
CBDVA	0.068
CBDB	0.336

Sample information

Sample name: Hemp Drops 1500mg CBD DC + HSO
Batch number: 676
Date of analysis: 2022 11 29

Summary

Total THC	0.13	%
Total THC	1.32	mg/g
Total CBD	16.50	%
Total CBD	164.96	mg/g

-- — compound below detection limit or not detected; LOQ <0.01%
THC content does not exceed legal limits.

Instrumental and analytical conditions.

Equipment: Quantitative analysis was performed using Shimadzu Cannabis Analyzer for Potency - an integrated HPLC system with built-in sample cooler, degasser, autoinjector and UV detector. NexLeaf CBX for potency, 2.7 µm, 4.6 x 150 mm column coupled with NexLeaf CBXGuard column. Shimadzu LabSolutions software.