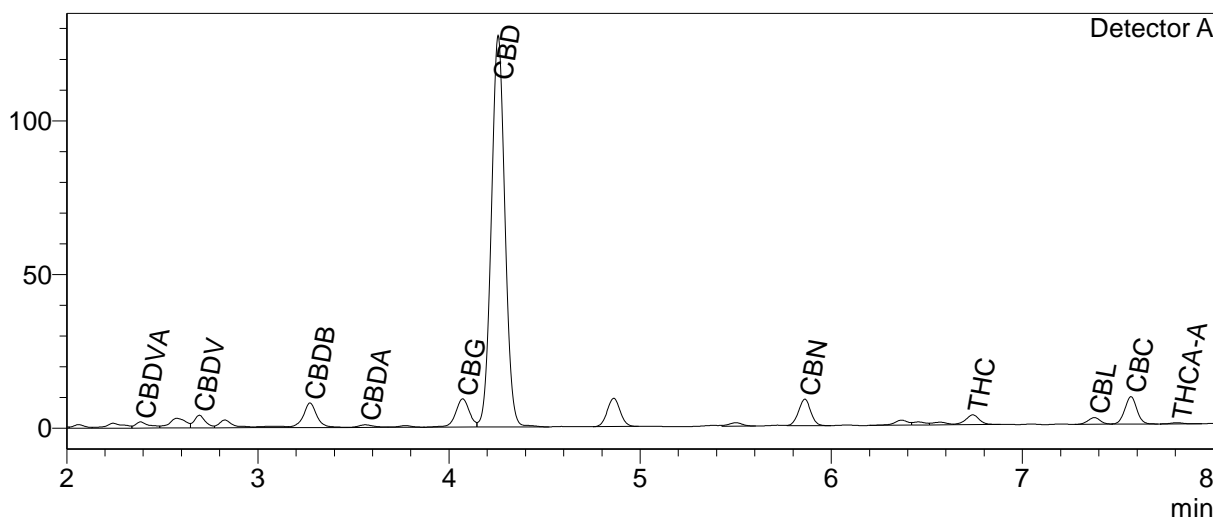


# jorùs

## CERTIFICATE OF ANALYSIS

### Chromatogram



### Quantitative Results

Detector A

Compound Name	Concentration, %
CBDV	0.131
CBDA	0.029
CBGA	--
CBG	0.371
CBD	5.358
THCV	--
CBN	0.170
THC	0.102
CBC	0.321
THCA-A	0.009
CBL	0.064
CBDVA	0.065
CBDB	0.261

### Sample information

**Sample name:** Hemp Drops 500mg CBD DC + HSO  
**Batch number:** 675  
**Date of analysis:** 2022 11 29

### Summary

<b>Total THC</b>	<b>0.11</b>	<b>%</b>
<b>Total THC</b>	<b>1.11</b>	<b>mg/g</b>
<b>Total CBD</b>	<b>5.38</b>	<b>%</b>
<b>Total CBD</b>	<b>53.84</b>	<b>mg/g</b>

-- — compound below detection limit or not detected; LOQ <0.01%  
THC content does not exceed legal limits.

Instrumental and analytical conditions.

Equipment: Quantitative analysis was performed using Shimadzu Cannabis Analyzer for Potency - an integrated HPLC system with built-in sample cooler, degasser, autoinjector and UV detector. NexLeaf CBX for potency, 2.7 µm, 4.6 x 150 mm column coupled with NexLeaf CBXGuard column. Shimadzu LabSolutions software.