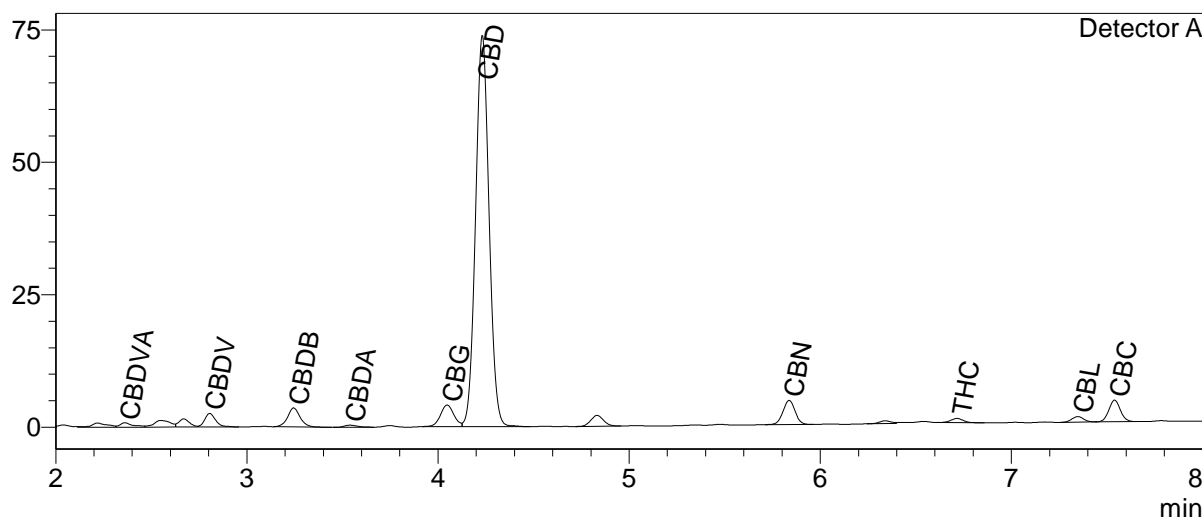


jorùs

CERTIFICATE OF ANALYSIS

Chromatogram



Quantitative Results

Detector A

Compound Name	Concentration, %
CBDV	0.390
CBDA	0.052
CBGA	--
CBG	0.785
CBD	15.662
THCV	--
CBN	0.426
THC	0.072
CBC	0.694
THCA-A	--
CBL	0.139
CBDVA	0.123
CBDB	0.540

Sample information

Sample name: Hemp Drops 1500mg CBD DC + HSO
Batch number: 615
Date of analysis: 2022 10 25

Summary

Total THC	0.07	%
Total THC	0.72	mg/g
Total CBD	15.71	%
Total CBD	157.08	mg/g

-- — compound below detection limit or not detected; LOQ <0.01%
THC content does not exceed legal limits.

Instrumental and analytical conditions.

Equipment: Quantitative analysis was performed using Shimadzu Cannabis Analyzer for Potency - an integrated HPLC system with built-in sample cooler, degasser, autoinjector and UV detector. NexLeaf CBX for potency, 2.7 µm, 4.6 x 150 mm column coupled with NexLeaf CBXGuard column. Shimadzu LabSolutions software.