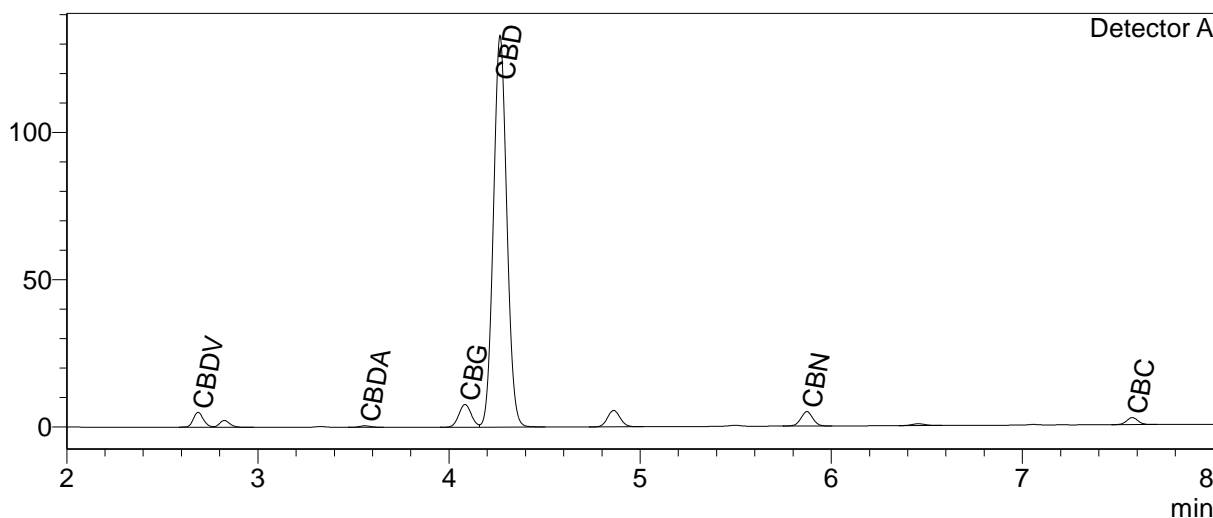


jorùs

CERTIFICATE OF ANALYSIS

Chromatogram



Quantitative Results

Detector A

Compound Name	Concentration, %
CBDV	0.269
CBDA	0.020
CBGA	--
CBG	0.524
CBD	10.219
THCV	--
CBN	0.165
THC	--
CBC	0.140
THCA-A	--
CBL	--
CBDVA	--
CBDB	--

Sample information

Sample name: Hemp Drops 1000mg CBD (BS10:1) + HSO
Batch number: 610
Date of analysis: 2022 10 20

Summary

Total THC	0.00	%
Total THC	0.00	mg/g
Total CBD	10.24	%
Total CBD	102.36	mg/g

-- — compound below detection limit or not detected; LOQ <0.01%
THC content does not exceed legal limits.

Instrumental and analytical conditions.

Equipment: Quantitative analysis was performed using Shimadzu Cannabis Analyzer for Potency - an integrated HPLC system with built-in sample cooler, degasser, autoinjector and UV detector. NexLeaf CBX for potency, 2.7 µm, 4.6 x 150 mm column coupled with NexLeaf CBXGuard column. Shimadzu LabSolutions software.