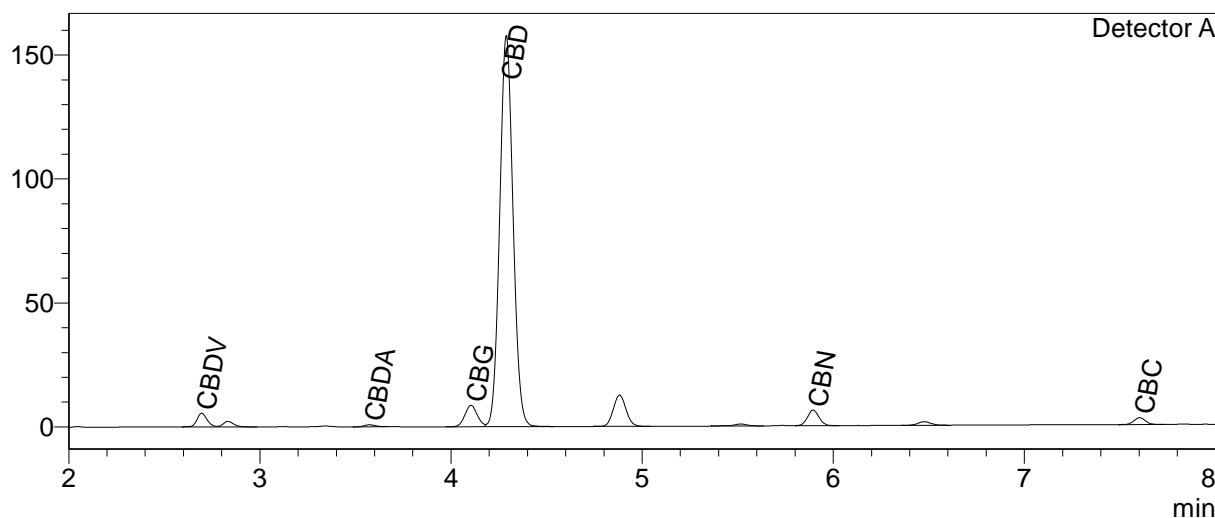


jorùs

CERTIFICATE OF ANALYSIS

Chromatogram



Quantitative Results

Detector A	
Compound Name	Concentration, %
CBDV	0.141
CBDA	0.017
CBGA	--
CBG	0.281
CBD	5.803
THCV	--
CBN	0.102
THC	--
CBC	0.078
THCA-A	--
CBL	--
CBDVA	--
CBDB	--

Sample information

Sample name: Hemp Drops 500mg CBD (BS10:1) + HSO
Batch number: 609
Date of analysis: 2022 10 20

Summary

Total THC	0.00	%
Total THC	0.00	mg/g
Total CBD	5.82	%
Total CBD	58.17	mg/g

-- — compound below detection limit or not detected; LOQ <0.01%
THC content does not exceed legal limits.

Instrumental and analytical conditions.

Equipment: Quantitative analysis was performed using Shimadzu Cannabis Analyzer for Potency - an integrated HPLC system with built-in sample cooler, degasser, autoinjector and UV detector. NexLeaf CBX for potency, 2.7 µm, 4.6 x 150 mm column coupled with NexLeaf CBXGuard column. Shimadzu LabSolutions software.