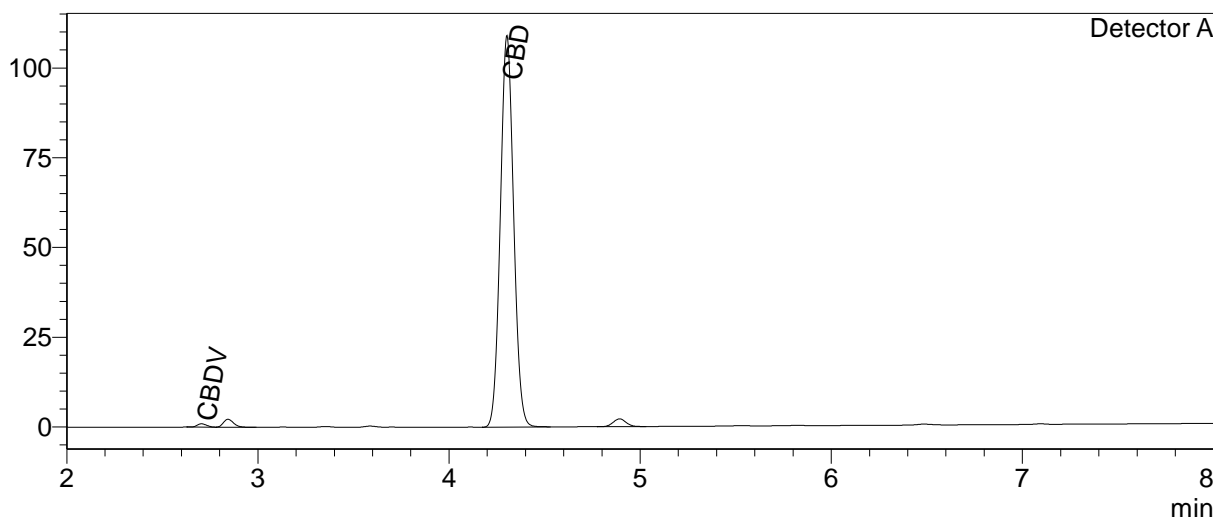


# jorùs

## CERTIFICATE OF ANALYSIS

### Chromatogram



### Quantitative Results

Detector A

Compound Name	Concentration, %
CBDV	0.096
CBDA	--
CBGA	--
CBG	--
CBD	20.335
THCV	--
CBN	--
THC	--
CBC	--
THCA-A	--
CBL	--
CBDVA	--
CBDB	--

### Sample information

**Sample name:** Hemp Drops 2000mg CBD ISO + HSO  
**Batch number:** 607  
**Date of analysis:** 2022 10 18

### Summary

<b>Total THC</b>	<b>0.00</b>	<b>%</b>
<b>Total THC</b>	<b>0.00</b>	<b>mg/g</b>
<b>Total CBD</b>	<b>20.33</b>	<b>%</b>
<b>Total CBD</b>	<b>203.35</b>	<b>mg/g</b>

-- — compound below detection limit or not detected; LOQ <0.01%  
THC content does not exceed legal limits.

Instrumental and analytical conditions.

Equipment: Quantitative analysis was performed using Shimadzu Cannabis Analyzer for Potency - an integrated HPLC system with built-in sample cooler, degasser, autoinjector and UV detector. NexLeaf CBX for potency, 2.7 µm, 4.6 x 150 mm column coupled with NexLeaf CBXGuard column. Shimadzu LabSolutions software.