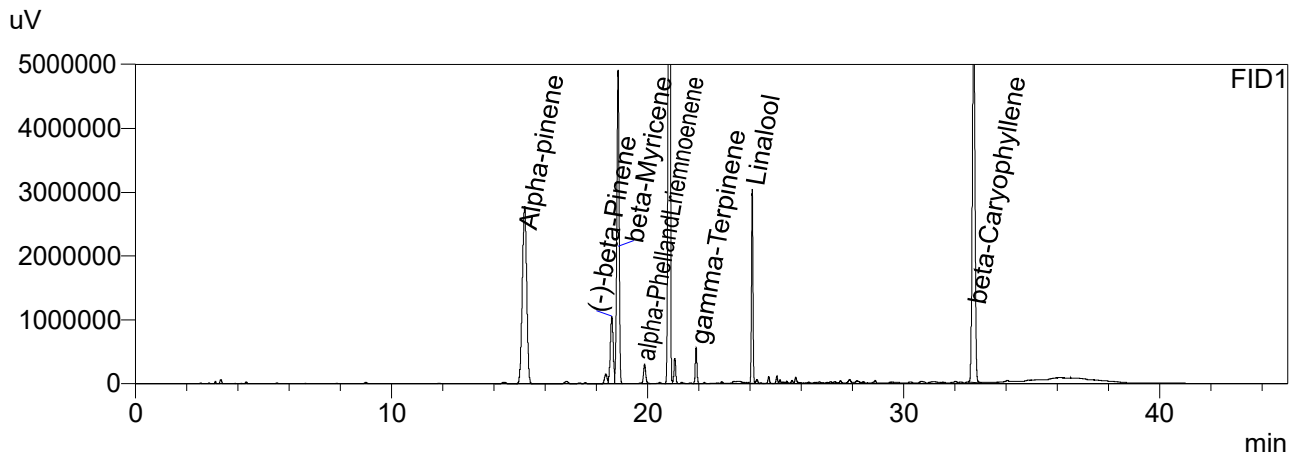


CERTIFICATE OF ANALYSIS

Chromatogram



Quantitative Results

Sample information

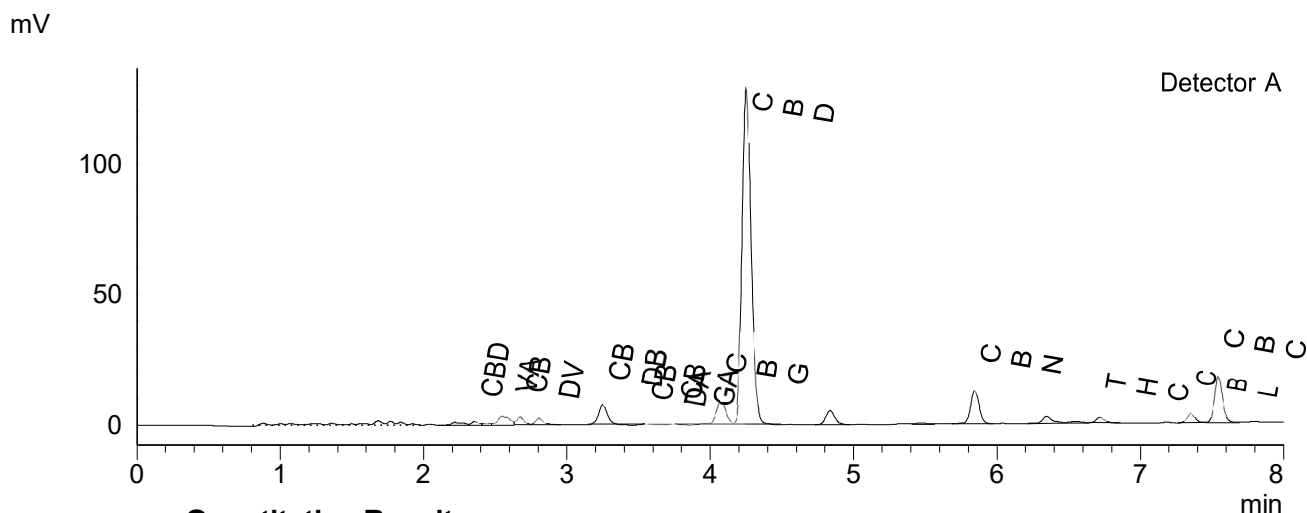
FID1

Compound Name	Concentration, %
Alpha-pinene	0.348
Camphene	--
(-)-beta-Pinene	0.068
beta-Myricene	0.331
delta-3-carene	--
alpha-Terpinene	--
Limonene	0.652
p-Cymene	--
Ocimene	--
gamma-Terpinene	0.005
Terpinolene	--
Linalool	0.120
(-)-Isopulegol	--
Geraniol	--
beta-Caryophyllene	0.414
alpha-Humulene	--
Nerolidol	--
(-)-Guaiol	--
(-)-alpha-Bisabolol	--
Nerol	--
alpha-Phellandrene	0.033

Sample name: Hemp Drops 1000mg CBD
Batch number: Batch 489
Date of Analysis: 2022 07 19

CERTIFICATE OF ANALYSIS

Chromatogram



Quantitative Results

Sample information

Detector A

Compound Name	Concentration, %
CBDV	0.192
CBDA	0.050
CBGA	0.030
CBG	0.815
CBD	10.470
THCV	--
CBN	0.507
THC	0.138
CBC	1.166
THCA-A	--
CBL	0.223
CBDVA	0.069

Sample name: Hemp Drops 1000mg CBD DC
 Analysis date: 2022 07 20

Summary

Total THC	0.14	%
Total THC	1.38	mg/g
Total CBD	10.51	%
Total CBD	105.14	mg/g

Instrumental and analytical conditions.

Sample preparation: 0.01 g (± 0.00001) of homogenous sample was diluted with 1 mL of HPLC grade methanol. Diluted sample was mixed, vortexed and centrifuged. Then the mixture was diluted again to a final concentration of 0.1 mg/mL. Peak identification and quantification was performed by comparing retention times and UV absorption spectra of the samples with those of the standard solutions.

Equipment: Quantitative analysis was performed using Shimadzu Cannabis Analyzer for Potency - an integrated HPLC system with built-in sample cooler, degasser, autoinjector and UV detector. NexLeaf CBX for potency, 2.7 μ m, 4.6 x 150 mm column coupled with NexLeaf Guard column. Data was analyzed using Shimadzu LabSolutions software.